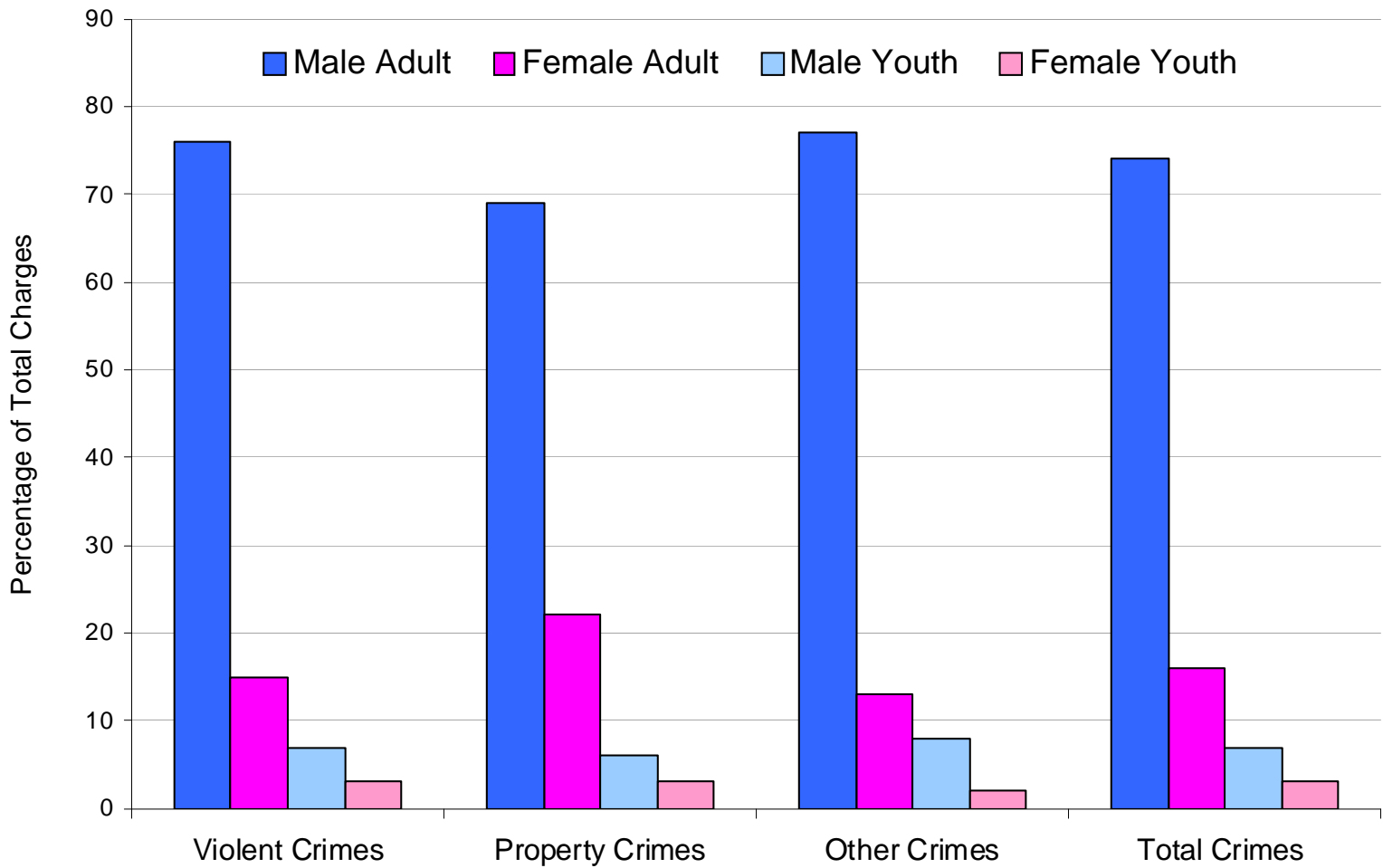


# Bad Boys: Men and Crime in BC

Males and Females as Percentage of Total Persons Charged 1999 - 2008



*Between 1999 – 2008, adult males, on average, represented 72 % of total persons charged.*

Source: British Columbia Crime Trends 1999 – 2008. Ministry of Public Safety and Solicitor General 2009.  
[http://www.pssg.gov.bc.ca/police\\_services/publications/statistics/BC Crime Trends 1999-2008.pdf](http://www.pssg.gov.bc.ca/police_services/publications/statistics/BC_Crime_Trends_1999-2008.pdf)

